

ALULINE



ALULINE SERIES LED linear luminaires are built for industrial and special applications that require higher than usual heat, chemical and mechanical resistance. ALULINE armatures have an aluminium profile with customized coating and mechanical finish. It has various connection possibilities that fit for both retrofit and newly designed applications.

Range of modifications allow ALULINE use in a wide range of applications: heavy duty industry, tunnel, infrastructure, mining, sports and less advanced options for retail and similar applications. ALULINE provides an innovative way to distribute the load across the power lines.



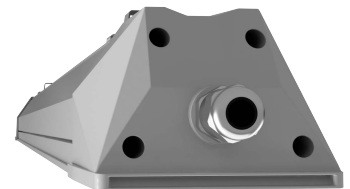
ALULINE



Luminous flux	5000lm - 15,000lm
Correlated color temperature	2700K - 6500K
Light source	Integral LED module
Housing	Aluminum
Cover	Hardened glass/ Polycarbonate
Screws	Stainless steel
Driver	Linear heavy duty industry
Electrical	Class I, Class II - optional
Input voltage	90-305VAC / 50-60Hz ; 170-305VAC / 50-60Hz
Surge protection	Built in: mains voltage peak up to 4kV
Dimming	DALI (Dali 2), Bluetooth - optional
Cable glands	M20x1.5
Wiring	1-phase / 3-phase / single-end, through-wiring
Lifetime	75000 hours at 35°C.
Operating temperature	-40° to 40°C/ Ta70° version - optional
Light fitting protection	IP66;IK08 (IK10 with PC diffuser)

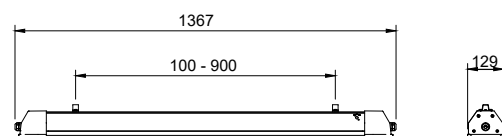
OPTIONAL FEATURES

- Smart control device - Bluetooth mesh
- Motion detection
- Wireless dimming - Bluetooth
- Customized holders
- Fast connection, including toolless version
- Corrosion Class - C5
- Outdoor usage kit

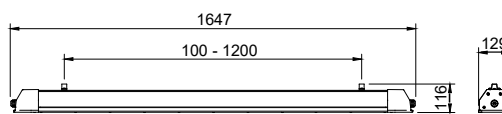


ALULINE

Name	Luminous flux netto (lm)	Power (W)	Standard CCT (K)
ALULINE M	5200	42	4000
ALULINE M DALI	5200	42	4000
ALULINE M PC	5200	40	4000
ALULINE M 1F Fast	5200	42	4000
ALULINE M 3F Fast	5200	42	4000
ALULINE L	9500	76	4000
ALULINE L DALI	9500	76	4000
ALULINE L PC	9500	74	4000
ALULINE L 1F Fast	9500	76	4000
ALULINE L 3F Fast	9500	76	4000
ALULINE L HO	13500	108	4000
ALULINE L HO DALI	13500	108	4000
ALULINE L HO 1F Fast	13500	108	4000
ALULINE L HO 3F Fast	13500	108	4000



ALULINE M



ALULINE L