

INDULINE67



INDULINE67 is a traditional design plastic luminaire for environments with higher than usual demands. The luminaire has IP67 ingress protection rating that allows it to be used in facilities with high level of humidity. Equipped with stainless steel clips, the luminaire extends its usage even to highly corrosive areas. In addition to IP67 and stainless steel components, the luminaire complies with the highest of impact index standards - IK10. Combination of high ingress and impact rating ensures suitability in active and demanding industrial and infrastructure applications. For usage in outdoor facilities, INDULINE67 is equipped with a breathing valve to ensure protection of internal components against ambient temperature fluctuation effect. The luminaire is designed with the purpose to minimize installation time.

INDULINE67 has a wide range of optional elements to make it easier to install and to use it in the most effective way, including adjustable wire, ceiling and wall installation, 1 phase or 3 phase single-end or through-wired options, fast-connection tool-less connectors (IP66) or high performance (IP67/68) Wieland connection systems. The luminaire can even be delivered with pre-installed cables and fast connectors for quick installation and easy service in the future. Electronically the armatures are equipped with heavy duty linear drivers with DALI option. Additional electrical options are available on demand, e.g. corridor function, movement sensor, Bluetooth wireless steering.



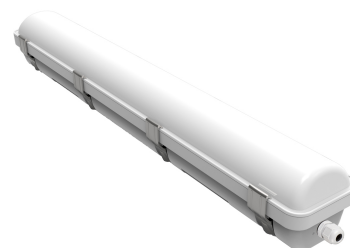
INDULINE67



Luminous flux	6150lm - 15,000lm
Correlated color temperature	3000K - 6500K
CRI	>80
Light source	Integral LED module
Housing	Polycarbonate
Cover	Polycarbonate
Clips	Stainless steel
Driver	Heavy Duty Industry linear driver
Electrical	Class I, Class II - optional
Input voltage	90-305VAC / 50-60Hz ; 170-305VAC / 50-60Hz
Surge protection	Built in: mains voltage peak up to 4kV
Dimming	DALI (Dali 2), Bluetooth - optional
Cable glands	PG13.5
Wiring	1-phase / 3-phase / single-end, through-wiring
Lifetime	75 000 hours at 35°C
Operating temperature	-25° to 50°C.
Light fitting protection	IP67;IK10

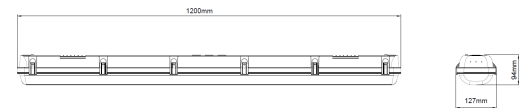
OPTIONAL FEATURES

- Smart control device
- Motion detection
- Wireless dimming
- Customized holders
- Fast connection - Wieland, Adels
- Outdoor usage kit

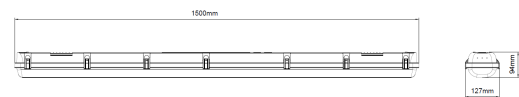


INDULINE67

Name	Luminous flux netto (lm)	Power (W)	Efficacy (lm/W)	Standard CCT (K)
INDULINE67 M	6150	43	143	4000
INDULINE67 M DALI	6150	43	143	4000
INDULINE67 L	10000	72	138	4000
INDULINE67 L DALI	10000	72	138	4000
INDULINE67 L HO	15000	108	138	4000
INDULINE67 L HO DALI	15000	108	138	4000



INDULINE67 M



INDULINE67 L