

LUNA SQUARE

- Square plastic indoor LED light fitting for surface mounting on the ceiling or on the wall, with impact-resistant diffuser made of translucent polycarbonate.
- The LUNA light fitting line can be used as a comprehensive solution for lighting of office buildings, schools, hospitals, libraries, as well as individual lighting of flat interiors, corridors, sanitary and welfare facilities.
- Thanks to its high luminous efficiency and low power consumption, it can suitably replace compact fluorescent light fittings and fluorescent tube light fittings.
- Maximum ambient temperature: $t_a = 35\text{ }^\circ\text{C}$.
- Maximum ambient temperature: $t_a = 25\text{ }^\circ\text{C}$ (version with emergency back-up source for 1 or 3 hours; M1h).
- Lifetime: 50,000 hours / L90B10.
- Light fitting protection: IP54 & IK10.



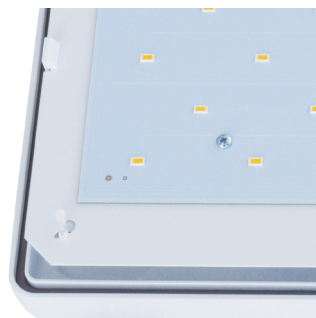
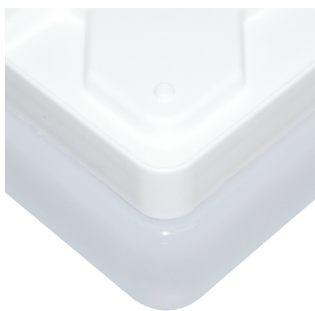
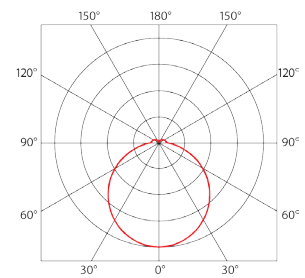
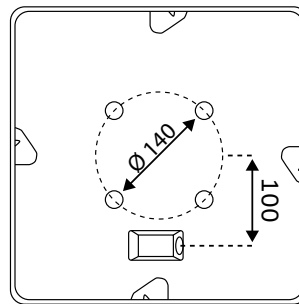
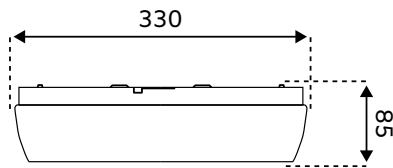
IP54

230 V
0/50/60
Hz

TECHNICAL INFORMATION

Diffuser: translucent polycarbonate (PC), UV stable, impact-resistant;
 Body: white polycarbonate (PC), UV stable, impact-resistant;
 Reflector: steel sheet, white colour (RAL 9003);
 Sealing: polyurethane (PUR), foamed body groove;
 Cable glands: rubber (SBS);
 Terminal block: screwless, five-pole (basic version);
 Rotary cap: polyamide + 10 % glass fibre.

Type	Ta. Max (°C)	Luminous flux light fitting (lm)	Power (W)	Efficacy (lm/W)	Net weight (kg)	Luminaire length (mm)
LUNA SQUARE 1550	35	1240	10	124	1.4	330
LUNA SQUARE 1900	35	1520	12	127	1.4	330
LUNA SQUARE 2200	35	1760	14	126	1.4	330
LUNA SQUARE 2500	35	2000	16	125	1.4	330
LUNA SQUARE 3600	30	2880	24	120	1.5	330



OPTIONAL FEATURES

- DALI adapter: Digital dimmable driver
- M1h & M3h: Back-up power for emergency illumination (1 or 3 hours)