

# STEEL SPORT



## **STEEL SPORT – HIGH-PERFORMANCE SPORTS LIGHTING**

The STEEL SPORT series is a robust and high-efficiency luminaire designed for various sports facilities, ensuring optimal performance for arenas and recreational venues. Its durable steel construction, mechanical protection net, and advanced optical control make it an ideal choice for demanding environments.

# STEEL SPORT



Description	Value
Luminous flux	11000* - 26100lm*
Correlated color temperature	4000K; K3000, K5000 - optional
Consumption	80* - 160W*
Light source	Integral LED module
Optics	Symmetrical and asymmetrical options available
Housing	Steel plate
Coating	RAL 9010 (pure white), other RAL - optional
Cover	Ball secure net
Electrical	Class I
Input voltage	198 - 264 VAC/50 Hz
Degree of protection (IP)	IP23
Impact strength (IK)	IK10
Dimming	DALI as standard
External cable	Supplied as optional according to project specification
Installation bracket	Ceiling, Wire, Tube (adjustable angle), Wall (45° angle)
Lifetime	L80 70000 hours (Ta 25°C)
Operating temperature	-10°C to 50°C
Standard dimensions	S - 85x189x1310 / L -87x326x1305
Certification	CE, Ball Test, ENEC
Warranty	5 years

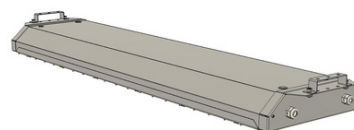
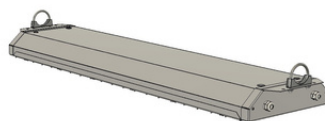
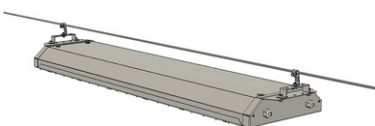
\* - Tolerance +/- 7%



STEEL SPORT S



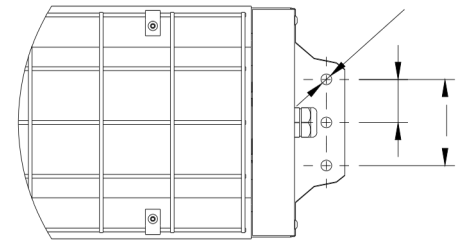
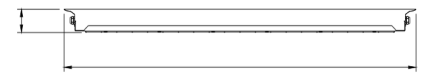
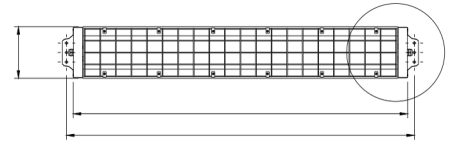
STEEL SPORT L



# STEEL SPORT



Name	Power (W)	Efficacy (lm/W)	Luminous Flux (lm)	Standard CCT (K)
SSS 80 840	80	157	12 560	4000
SSL 120 840	120	160	19 200	4000
SSL 145 840	145	160	23 200	4000
SSL 160 840	160	163	26 080	4000



## Key Features

- Superior Optical Performance – Available in symmetrical and asymmetrical beam angles to optimize light distribution for different sports facility layouts.
- High Durability – Steel plate housing with a ball-secure protective net ensures resilience in demanding environments.
- Versatile Installation – Multiple mounting options: ceiling, wire, tube (adjustable angle), and wall (45° angle) to suit various sports venues.
- Smart Lighting Control – DALI dimming as standard for energy efficiency and advanced lighting management.
- Reliable and Efficient – Delivers up to 26,100lm with a high efficacy of up to 163 lm/W, ensuring bright and cost-effective illumination.
- Long Operational Life – L80 70,000 hours at Ta 25°C, minimizing maintenance requirements.
- Weather-Resistant – IP23-rated for protection against dust and water ingress, and IK10 impact resistance for added durability.
- Customizable Color Temperatures – Standard 4000K, with optional 3000K and 5000K for different lighting atmospheres.

